



THOMAS GEORGE
ESTATES

Next Generation

OF RUSSIAN RIVER VALLEY WINEMAKING

HAND-CRAFTED, SMALL-LOT ARTISAN WINES

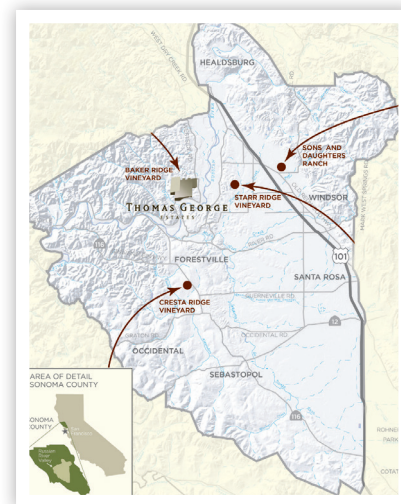


THE HISTORY

- Founded in 2008, Thomas George Estates Winery is an artisan Russian River Valley producer of small lot, vineyard designated wines with a focus on Pinot Noir and Chardonnay.
- Includes iconic vineyards previously owned by legends Davis Bynum and Gary Farrell

THE WINE

- 100% Estate Grown
- Four distinct and diverse sites:
 - Sons & Daughters (East corner)
 - Starr Ridge (Eastern Bank)
 - Baker Ridge (Westside Road)
 - Cresta Ridge (Green Valley)
- Winemaking approach is terroir driven
 - Hand-harvested, cluster sorted and berry sorted
 - Fermented and aged in individual lots within each single vineyard
 - Objective is to express the diversity in the terroir in the Russian River Valley AVA



WHY RUSSIAN RIVER VALLEY

Cool climate with diverse microclimates and soil composition best suited for Chardonnay and Pinot Noir

WHY THOMAS GEORGE ESTATES

100% Estate grown, terroir driven philosophy dedicated to expressing the best representation of the diversity within the Russian River Valley

WHY NOW

Signature California appellation, accounting for one-sixth total planted acreage in Sonoma Country

EDV

ESPRIT DU VIN
A TAUB FAMILY COMPANY

ESPRIT DU VIN, FINE WINE MERCHANTS • WWW.EDVWINES.COM

f t i p EDVWINES



THOMAS GEORGE ESTATES

ESTATE CHARDONNAY 2015

Sons & Daughters Ranch

- An artisan Russian River Valley producer of small lot, vineyard designated wines with a focus on Pinot Noir and Chardonnay, founded in 2008
- 100% Estate grown, terroir driven philosophy dedicated to expressing the best representation of the diversity within the Russian River Valley
- 100% Chardonnay
- Aged unoaked, sur lie with no malolactic conversion
- Big and explosive flavors of honeydew melon and cantaloupe flesh out the palate



THOMAS GEORGE ESTATES

ESTATE CHARDONNAY 2013

- An artisan Russian River Valley producer of small lot, vineyard designated wines with a focus on Pinot Noir and Chardonnay, founded in 2008
- Blend from all four Estate Vineyards, hand harvested
- 100% Chardonnay
- Aged sur lie with no malolactic conversion
- Limited malolactic conversion allows subtle flavors of citrus zest and custard to express themselves amongst stronger notes of stone fruit



THOMAS GEORGE ESTATES

ESTATE PINOT NOIR 2012

90pts
Wine Enthusiast
4/16

- An artisan Russian River Valley producer of small lot, vineyard designated wines with a focus on Pinot Noir and Chardonnay, founded in 2008
- Blend from all four Estate Vineyards, hand harvested
- 100% Pinot Noir
- Aged on lees for 11 months in 96% French oak barrels and 6% Concrete egg
- Explosive flavors of wild berry and dark blue fruit dominate the mid-palate with undertones of thyme and rosemary



THOMAS GEORGE ESTATES

ESTATE PINOT NOIR 2012

Baker Ridge Vineyard

90pts
Wine Enthusiast
4/16

- An artisan Russian River Valley producer of small lot, vineyard designated wines with a focus on Pinot Noir and Chardonnay, founded in 2008
- Baker Ridge Vineyard, contiguous with our winery site, is 3 acres on the northeast facing coolest section of the vineyard and originally owned by legend Davis Bynum
- 100% Pinot Noir
- Aged on lees for 11 months in French oak barrels
- Violets, roses, and lavender aromas lead into pomegranate, boysenberry and rhubarb on the palate



THOMAS GEORGE ESTATES

ESTATE CHARDONNAY 2012

Cresta Ridge Vineyard

90pts
Wine Enthusiast
2/16

- An artisan Russian River Valley producer of small lot, vineyard designated wines with a focus on Pinot Noir and Chardonnay, founded in 2008
- Cresta Ridge Vineyard, located to the west of TGE in the green valley sub-appellation of RRV, was planted in the late 1990's by Gary and Debbie Farrell
- 100% Chardonnay
- Lees stirred twice a month for 4 months, then allowed to settle
- The most overt of the TGE Chardonnays, showing intense aromatics of stone fruit, green apple and white flower. Palate is rich with spring cream and lemon custard



THOMAS GEORGE ESTATES

ESTATE PINOT NOIR 2012

Cresta Ridge Vineyard

89pts
Wine Enthusiast
4/16

- An artisan Russian River Valley producer of small lot, vineyard designated wines with a focus on Pinot Noir and Chardonnay, founded in 2008
- Cresta Ridge Vineyard, located to the west of TGE in the green valley sub-appellation of RRV, was planted in the late 1990's by Gary and Debbie Farrell
- 100% Pinot Noir
- Aged on lees for 11 months in French oak barrels
- The wine has density, weight, and richness. Framed by bright orange citrus acidity and masculine tannins, finishing with a touch of apple pie crust and brioche



THOMAS GEORGE ESTATES

ESTATE CHARDONNAY 2012

Starr Ridge Vineyard

91pts
Wine Enthusiast
2/16

- An artisan Russian River Valley producer of small lot, vineyard designated wines with a focus on Pinot Noir and Chardonnay, founded in 2008
- Starr Ridge Vineyard, located to the east of TGE on Starr Road in RRV, was planted in the late 1990's by Gary and Debbie Farrell
- 100% Chardonnay
- Lees stirred every two weeks for 4 months, then allowed to settle
- Bright and fresh, this wine comes across lean with incredible underlying complexity. Flavors of lemon crème and vanilla almond help make this our most Meursault-like Chardonnay thus far



THOMAS GEORGE ESTATES

ESTATE PINOT NOIR 2012

Starr Ridge Vineyard

- An artisan Russian River Valley producer of small lot, vineyard designated wines with a focus on Pinot Noir and Chardonnay, founded in 2008
- Starr Ridge Vineyard, located to the east of TGE on Starr Road in RRV, was planted in the late 1990's by Gary and Debbie Farrell
- 100% Pinot Noir
- Aged on lees for 11 months in 100% French oak barrels
- The nose exhibits strawberry followed by rhubarb and cranberry. On the palate, the wine shows more red fruits with a hint of orange peel, a well-defined mid palate that finishes with rounded, soft tannins

EDV

ESPRIT DU VIN
A TAUB FAMILY COMPANY

ESPRIT DU VIN, FINE WINE MERCHANTS • WWW.EDVWINES.COM

f t i p EDVWINES